

The image displays a variety of MatchPatchPro products arranged on a dark surface. In the background, several cardboard boxes are stacked, each featuring a 'MatchPatchPro' label. The products in the foreground include:

- Two large white plastic jugs: 'Medium Speed Resin Medium Speed Part A' (left) and 'Fast Cure Resin Fast Speed Part A' (right).
- Two medium-sized white plastic jugs: 'Medium Speed Resin Medium Speed Part B' (left) and 'Fast Cure Resin Fast Speed Part B' (right).
- Two large white plastic buckets: 'Grout Powder' (left) and 'PART "C" Cements' (right).
- Two wooden mixing sticks, one leaning against the 'Grout Powder' bucket and the other against the 'PART "C" Cements' bucket.

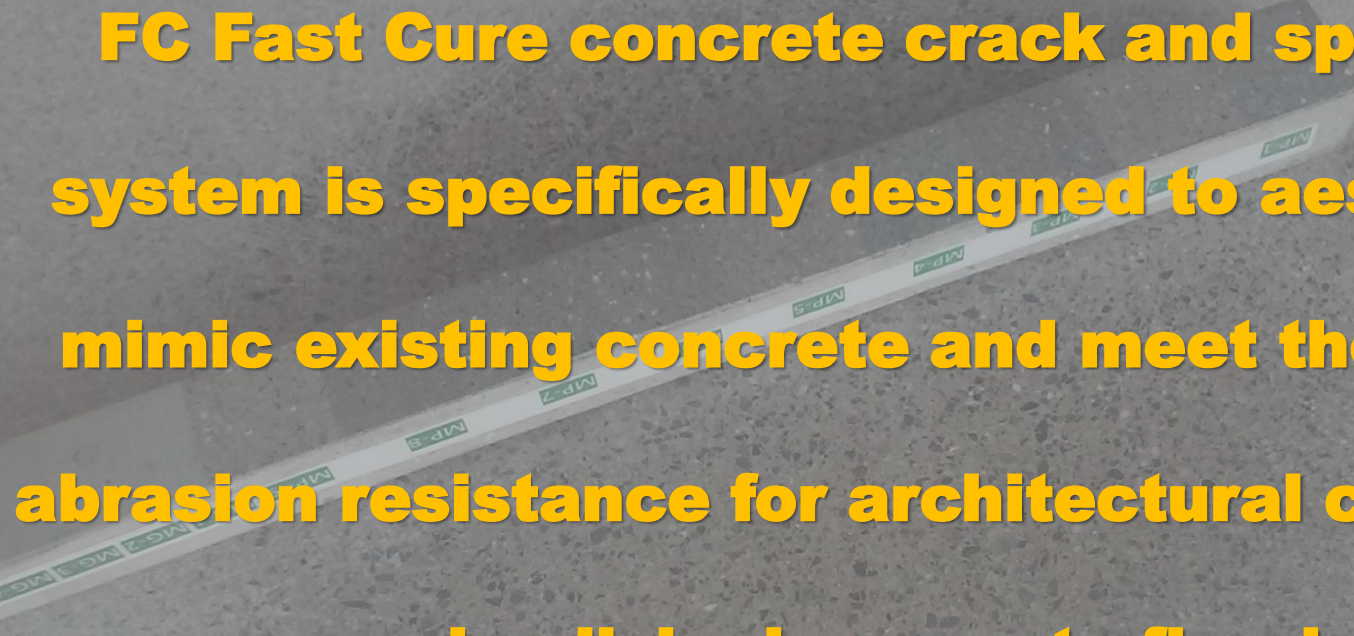
Below the products, the text *The patch that matches!* is written in a stylized orange font. At the bottom, the website www.matchpatchpro.com is displayed in a large white font.

Match Patch Pro

Concrete repair systems



Match Patch Pro FC
(Fast Cure)



FC Fast Cure concrete crack and spall repair system is specifically designed to aesthetically mimic existing concrete and meet the required abrasion resistance for architectural clear sealed and polished concrete flooring.

Exclusive Design

- ❑ Match Patch Pro composition through its hybrid blend of resin, Portland cement and latex binders overcomes many of short-falls of the single binder products. There are no known equal or better architectural repair products.
- ❑ Only architectural concrete floor repair material that utilizes performance characteristics of multiple concrete binders.
- ❑ Exclusive in-field scientific color match system allowing easy, on site color matching of existing concrete slabs.

Features

- ✓ Cure for polish in two hours.
- ✓ Cures for initial grind in 20 to 60 minutes.
- ✓ Accepts concrete dyes.
- ✓ Densifies with Reactive Silicates.
- ✓ Can be matched to concrete of any age close to perfection on site.
- ✓ Does not shrink or crack.
- ✓ Does not fish bowl when processed.
- ✓ Bonds tenaciously at critical repair edges and does not chip or break at the thinnest feather edges.
- ✓ Can fill spall of any size up to .20 cubic feet, even very shallow spalls or scratches.
- ✓ A virtually invisible crack/spall repair material.
- ✓ No resin/cement stain ghosting or halos around repair areas.

The importance of using local sands

MatchPatchPro

US SANDS MAP WITH LINKS 2017

States are colored with images of local sands native to the region.



Local Masonry sands and Concrete sands can be found at Landscape Supplies, Bulk Yards, Cement Producers of Ready Mix Concrete. The sand bag sand found in the white bag in Large Home Improvement Stores is usually from a local source also. Sands must be dried out completely for use in MPP products. Click on a state for a link to a known local supplier. Many suppliers have several locations.

Mixing your local sands with part C

Blend local "DRY"
Masonry sand 2-1
with Part C Cements
for Patch. Wet sand
can be air dried or
torch dried.

Masonry sand is a
blend of 5-7 mesh
sizes #100 - #12



Repair Schedule

Repairs are installed first to prevent “fish bowling” of open holes and spalls.

Grinder tooling will slightly travel into spalls larger than a dime, sloping down the outside edges of spalls. No more than one quick grinding pass should be done prior to installation of Match Patch Pro.

- ❖ If the floor has mastics or other residues; only do a quick first pass with the tooling you have chosen, to expose the spalls and cracks needed to repair.
- ❖ If the floor is clean, with the spalls and cracks fully visible; patch first, before you start grinding the field of the floor.

Surface Preparation

All dirt, oil, dust, foreign contaminants and laitance must be removed to assure a trouble free bond to the substrate. For repair of spalled concrete, a stiff wire brush can be used to remove all loose concrete. After wire brushing the spalled area, remove all loose dust and debris with an industrial vacuum.



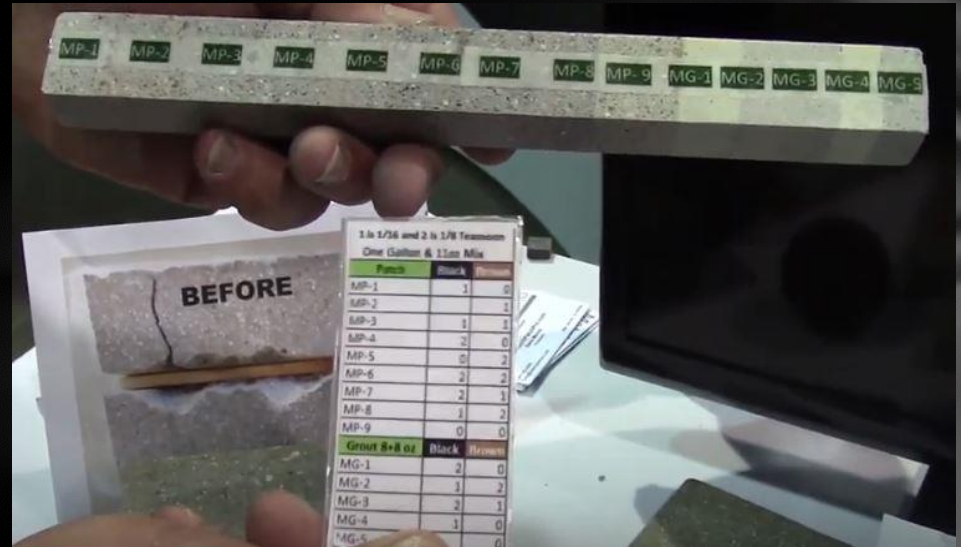
Matching the concrete

Perform a 12" color match sample polished at the level specified for project on project concrete. Follow same tooling steps floor will be processed densifying at #200 Resin and finishing with #400. The match Stick is #400 finish. Variable speed hand grinder is best.



Compare to Match Stick and 9 sand
patch color numbers on stick.
Compare number to Color Code Chart

Patch	Black	Brown
MP-1	1/16 tea	0
MP-2	0	1/16 tea
MP-3	1/16 tea	1/16 tea
MP-4	1/8 tea	0
MP-5	0	1/8 tea
MP-6	1/8 tea	1/8 tea
MP-7	1/8 tea	1/16 tea
MP-8	1/16 tea	1/8 tea
MP-9	0	0
MG-1	1/8 tea	0
MG-2	1/16 tea	1/8 tea
MG-3	1/8 tea	1/16 tea
MG-4	1/16 tea	0
MG-5	3/16 tea	0



There are only two color additives; Black and Brown.

- **There are two sizes of measurement for color in the 11 ounce mix; 1/16 teaspoon and 1/8 teaspoon.**
- **There is also a One teaspoon for pre mixing 5 ½ quarts of patch mix. The 1 teaspoon is the same as 1/16 teaspoon and 2 teaspoon is the same as 1/8 teaspoon on the chart.**
- **The 12 oz scoop is used for every mix. Fill the scoop with mixed dry patch 1/4" - 1/8" below rim.**

***Example: MP-7 chosen. 1/8 teaspoon of black + 1/16 teaspoon of brown to 11 ounces of dry patch mix. OR 2 teaspoon of black + 1 teaspoon of brown to 5 ½ quarts of dry patch mix**

Perform color match sample

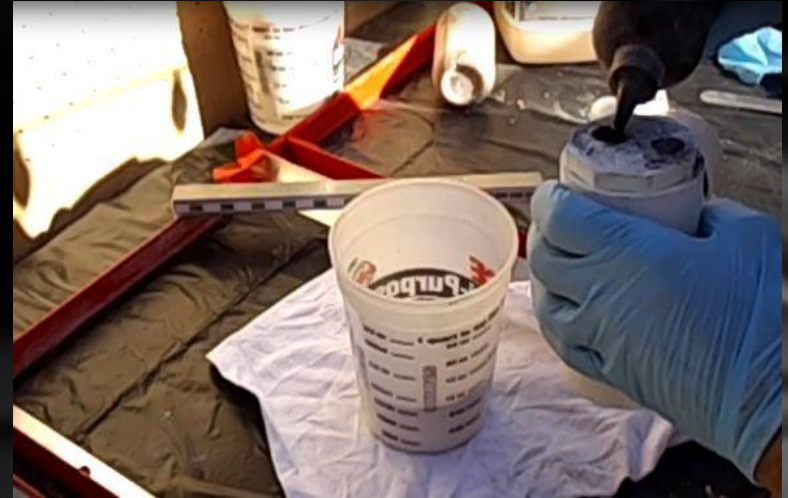


Many times the adjoining color on the Match Stick will match. Make adjustments as needed for closest match possible if specified or budgeted.

Step by step mixing instructions



1. Pour 1 measured scoop of part C/sand.



2. Add chosen colorant to part C/sand and mix.



3. Pour 2 ounces part A into mixing cup.



4. Pour 2 ounces part 2 into mixing cup.



5. Mix A and B quickly to streak free.



6. Add id half of color mixed part C/sand.



7. Mix remainder of part C/sand "peanut butter."

You always use the scoop for each mix including a 5 ½ quart mix that you have pre-colored. You can use 8 ounces to 11 ounces of dry mix to 4 ounces of mixed resin. Always be consistent for mix and application.

Place Patches



1. Install mix into cleaned repair, over fill.



2. Grind cured patch flush with concrete.



3. Topically add water to top of patch. Let soak in 10 minutes and dry completely.



4. Apply densifier at your scheduled step.

Using wide mouth bottle for cracks





A wheeled cart as shown is a great way to store and work with Match Patch Pro products.

The US Saws VGS – 10 variable speed edger is a great way to grind Match Patch Pro materials flush and flat on adjoining concrete, using the same tooling as your big grinders.

www.ussaws.com



Tips

- ✓ If patch material cannot be installed easily do to curing, discard and mix more. Move fast as a 11 ounce mix has an 8 minute pot life.
- ✓ If you are too light in color on your patch, you can use concrete dye to tint installed patch for desired color.
- ✓ If you are dying the floor, consider #9 on stick (un-tinted) as patch dyes darker than concrete.
- ✓ Critical or porous patches need to be grouted. Refer to grout mixing instructions on MPP FC Installation sheet.
- ✓ Avoid high humidity and wet floor conditions, sand must be DRY.
- ✓ Use re-usable wide mouth plastic squeeze bottles to install cracks. Available from MPP.
- ✓ Plastic incremented mixing cups are available in home improvement stores. The cup can be re-used many times.

Each Kit contains:

Part A and B Resins

Part C Cements

Match Stick

Measures

Black and Brown
colorants

Instructions

1. Blend local **"DRY"** Masonry sand 2-1 with Part C Cements for Patch. Wet sand can be air dried or torch dried. Masonry sand is a blend of 5-7 mesh sizes #100# - #12.



2. Perform a 12" color match sample polished at the level specified for project on project concrete. Follow same tooling steps floor will be processed densifying at #200 Resin and finishing with #400. Variable speed hand grinder is best.

12" Sample on Concrete floor to polish.

Sample Shape

3. Compare to Match Stick and 9 sand patch color numbers on stick.

1	2	3	4	5	6	7	8	9	1	2	3	4	5
Colors with Aggregate									Grout				

Compare number to Color Code Chart

Patch Black Brown (See *Example Below)

MP-1 1/16 tea 0

MP-2 0 1/16 tea

MP-3 1/16 tea 1/16 tea

MP-4 1/8 tea 0

MP-5 0 1/8 tea

MP-6 1/8 tea 1/8 tea

MP-7 1/8 tea 1/16 tea

MP-8 1/16 tea 1/8 tea

MP-9 0 0

Grout Black Brown (8oz Resin to 8oz Part C)

MG-1 1/8 tea 0

MG-2 1/16 tea 1/8 tea

MG-3 1/8 tea 1/16 tea

MG-4 1/16 tea 0

MG-5 3/16 tea 0

4. There are only two color additives; Black and Brown.

- A. There are two sizes of measurement for color in the 11oz mix; 1/16 teaspoon and 1/8 teaspoon.
- B. There is also a One teaspoon and a Two teaspoon these are for pre mixing 5 1/4 quarts of patch mix. The 1 teaspoon is the same as 1/16 teaspoon and the 2 teaspoon is the same as 1/8 teaspoon on the chart.
- C. The 12 oz scoop is used for every mix. Fill the scoop with mixed dry patch 1/4" - 1/8" below rim.

*Example: MP-7 chosen. 1/8 teaspoon of black + 1/16 teaspoon of brown to 11ounces of dry patch mix. OR 2 teaspoon of black + 1 teaspoon of brown to 5 1/4 quarts of dry patch mix

5. Perform at least one sample to verify color match. Mix material as below.

- A. Mix 2oz part A to 2oz part B Resin. Quickly stir together to a no streak consistency.



- B. Add one scoop of mixed and colored patch mix to mixed resin. Mix quickly wetting out completely.

- C. Apply to spall or crack, overfilling 1/8" over edges and above surface. You must move **quickly** due to the 8 minute cure. Temperatures affect cure times. Store materials in cool dry place.

- D. Patch will be cured in 30-50 minutes for grinding. Grind flush with adjoin concrete surface.

- E. Mix grout 4oz A to 4oz B resins to 8oz part C cements with color added, (No Sand or Aggregates). You can cut mix in half if smaller amount is needed. Grouting may not be necessary and is not required.



- F. Grind grout flush with surface after 40-60 minute cure.

- G. Apply generous amount of water to patch surface. Wipe off excess after a period of 10 minutes and let patch completely dry. This hardens the surface.

6. Continue specified polishing processes.

*You are not limited to the stock colors on the match stick. Adjustments to color adding can be made if needed for closer matching.

*If you're patching is too light, it can be dyed using thinned out water dyes black or brown as needed.

*Your local sand is 60% of the color match.

SAND MUST BE DRY!

*If you are matching for large aggregate exposure, place into wet patch by hand do not add to mix.

*If you're experiencing excessive swelling due to high humidity or wet slab, or Fast Cure is too fast in your application, Use MPP LPL.

* Video instruction is available at www.matchpatchpro.com

* Technical help is available through

Dave Moore 941-408-5999.

You can also email: dave@matchpatchpro.com

Before and After repairs





WINNER !
2016 Match Patch Pro
Repair Contest

\$1,000.00





Joint re-build Polyurea, brass and zinc.





Match Patch Pro

Concrete repair systems



Match Patch Pro
Grout Powder

Instructions Match Patch Pro Pin Hole Grout Powder

- **Surface Conditions:** Compatible with wet or dry Concrete Polish procedures.
- **Packaging:** 50 pound pail that will do 5,000 – 7,000 sq ft
- **Color:** White
- **Cure time:** 2 Hours



1. Wet clean floor after #100 grit cut exposing and cleaning all imperfections.



**2. Liberally Broadcast grout onto floor.
Only enough to fill imperfections.**



3. Spread dry grout evenly with broom.



Use Grout pans on grinder.



5. Spraying 20% Latex - 80% water in front of grinder with grout pans attached, drive in wet grout powder. Crosshatch if floor is not flat.



**Let Grout dry and spray densifier just enough
to wet the dry grout.**



Let completely dry (about 1 hour) and move forward with polishing process. Most use #100 resins to cut off excess dried grout.
If grinding off wet, let cure 12 hours.



Grout becomes harder with every hour after the densifier has dried. Do not wait more than 2 hours to cut off excess dry or it will become too hard.



Match Patch Pro

Concrete repair systems



Match Patch Pro
Chem Grout

**Chemical Grout Mix *Also for grouting patches using
FC resin as used with patch.**

**Match Patch Pro can be mixed into a grout
formulation.**

**It can be mixed and poured to the floor to grout pin
holes and hairline cracks.**

The grout has a very low viscosity of 85 cps.

**The grout will achieve saturation into the concrete
surface, making it chemically resistant.**

- A) Floor Grouting is done after #50 hybrid cuts. It is used with Grout Pans and Medium Speed Resin.
- B) One minute water saturation test must be performed.
- C) Test area to gauge chemical resistance should be performed as floor will be polished and documented.
- D) Mixing color for grouting entire floor area.

1. Mix chosen grout colorant into one quart of part C cement "Smooth. Completely mix using box type mixing blade on an industrial drill for two minutes.
2. Mix Pour 16oz (One Pint) Part B resin into clean 5 gallon bucket. Add 16oz (One Pint) Part A resin into same 5 gallon bucket and completely mix using box type mixing blade on an industrial drill for 30 seconds.
3. Immediately add one quart part C "Smooth" Part C cement that was colored to mixed A&B resin. Completely mix using box type mixing blade on an industrial drill for 30 seconds.
4. Immediately pour a ribbon on floor and squeegee using a stand up metal smoothing trowel.
5. Run grinder with Grout Pans over wet grout. A medium speed pace with slow speed tooling travel.
6. Repeat process until entire floor has been covered. Let cure for three hours before wet or dry grinding.

Installing the grout.



Grout Installed



Cutting grout off.



Results





Ready for grout

Hydraulic oil does not penetrate



Grout installed

Soaks in to regular polish





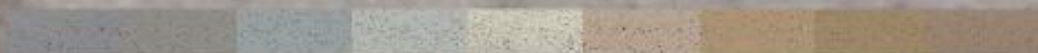
These are some enemies of Polished Concrete

NO MORE!

www.matchpatchpro.com

Get the Protection!

MatchPatchPro



MatchPatchPro

www.matchpatchpro.com

Match Patch Pro Impregnating Chemical Resistant Grout to varied surfaces

Very porous concrete with no deficient aggregates	4
Dense concrete with no deficient aggregates	3
Concrete with deficient aggregates	2-3
*Cement Overlay Material	2
Grout specimen completely immersed in muriatic acid for 23 hour period. Zero damage	4+
1-Not Recommended 2-"Fair" 50% added resistance 3-"Good" 80% added resistance 4-"Excellent" 100% resistance	
Note: Passing a one minute water saturation test is required for "Good" or "Excellent" resistance with no deficient aggregates. *Failed water absorption test.	
Concrete and concrete mixtures can vary tremendously. On site testing is required.	

- MPP FC Kit: \$729.00 will fill 1,000 2" – 3" Spalls \$0.85 each
- MPP Dry Grout: \$245.00 50 lb pail will cover 5000 – 7000 sq ft \$0.04 sq ft
- MPP Chem Grout: \$479.00 1,750 sq ft kit, \$829.00 3,500 sq ft kit \$0.20 \$0.30 sq ft.

Testament's

"I could see this system on every polished concrete truck in the nation!"

Bob Harris

Decorative Concrete Institute

Concrete Network

"Without a doubt an incredible material!"

Barton Kendall Dowe

Diamond Shine, Australia

"Game Changer" "Hocus pocus" "Incredible Match!" "My guys won't use anything else" "Only product the Architect will allow" "Unbelievable" "My customers love it!"

"Magic!" "Finally an answer"

The Match Patch Pro Difference

Advanced repair systems with no known better or equals.

Ability to already have every concrete color stocked on your polishing truck or trailer.

Customer Satisfaction.

Extra money revenue for projects.

Contact

www.matchpatchpro.com

Dave Moore

941-408-5999

dave@matchpatchpro.com

Match Patch Pro LLC 2016 all rights reserved.



I look forward to meeting you in person at our next trade show event.
"We are only as good as our repairs."

Dave Moore
President - Match Patch Pro LLC